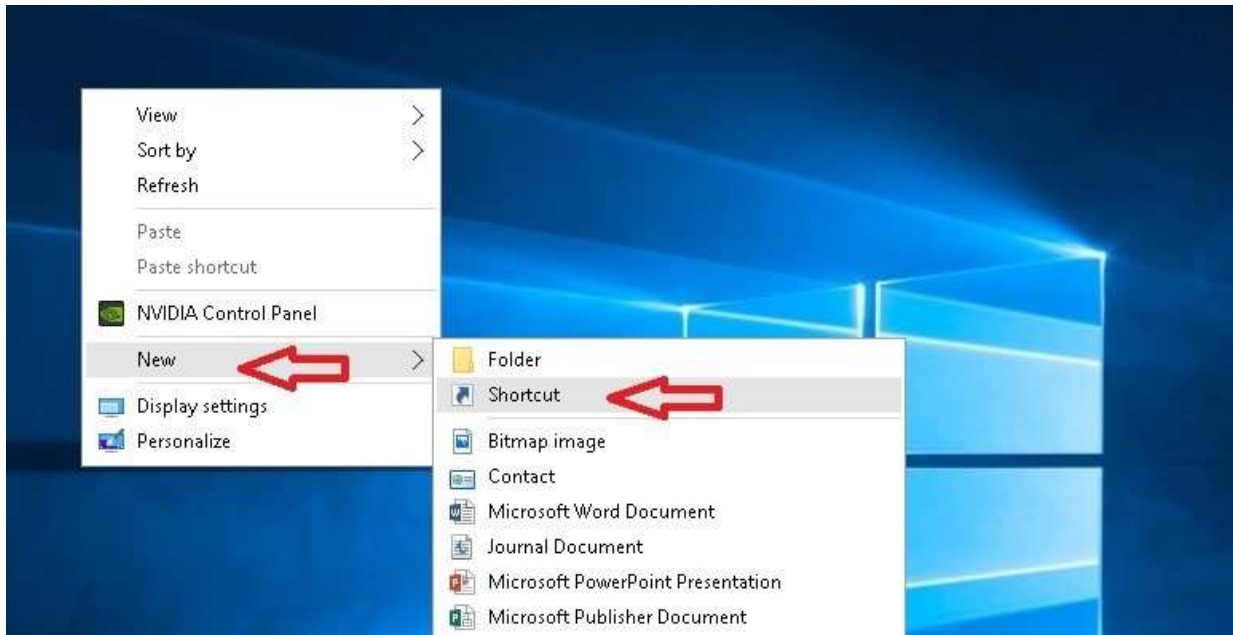


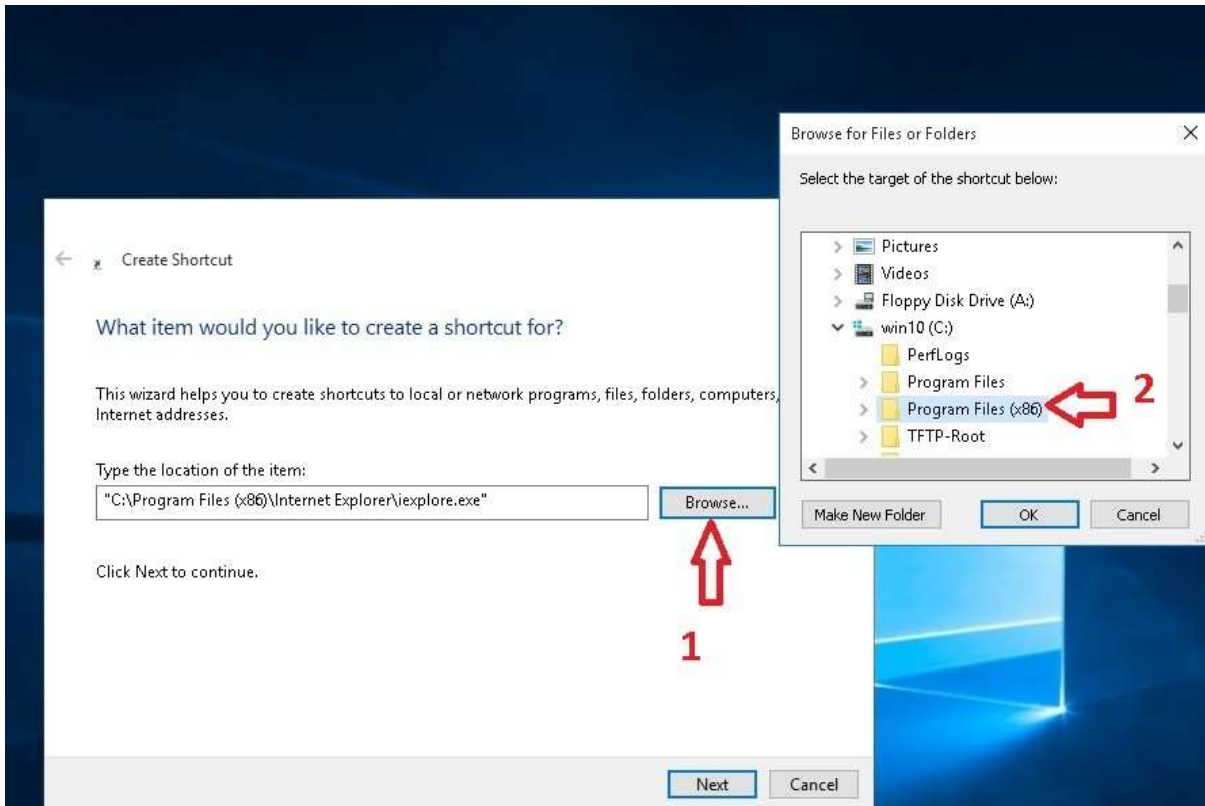
"به نام خدا"

## راهنمای رفع مشکلات وب

- چگونه در ویندوز 10 از اینترنت اکسپلورر (IE) استفاده کنیم؟




ابتدا روی یک نقطه خالی از Desktop کلیک راست کرده و سپس مطابق تصویر فوق ابتدا New و سپس Shortcut را انتخاب می‌نمائیم. سپس روی Browse کلیک کرده و طبق تصویر زیر ابتدا درایو نصب ویندوز که معمولا درایو C می‌باشد را انتخاب کرده و سپس بسته به نوع ویندوز، اگر ویندوز ۳۲ بیت باشد پوشه Program Files و اگر ویندوز ۶۴ بیت باشد Program Files(x86) را انتخاب می‌کنیم و سپس پوشه Internet Explorer را انتخاب کرده و در نهایت برنامه iexplore.exe را انتخاب می‌نمائیم. پس از انتخاب مسیر در صفحه جاری Next و سپس Finish را کلیک می‌کنیم.



- نحوه رفع مشکل SSL در مرورگرهای مختلف:





در Internet explorer :

 There is a problem with this website's security certificate.

The security certificate presented by this website was not issued by a trusted certificate authority.  
The security certificate presented by this website has expired or is not yet valid.  
The security certificate presented by this website was issued for a different website's address.

Security certificate problems may indicate an attempt to fool you or intercept any data you send to the server.

**We recommend that you close this webpage and do not continue to this website.**

-  [Click here to close this webpage.](#)
-  [Continue to this website \(not recommended\).](#) 
-  [More information](#)

: Firefox در

**This Connection is Untrusted**

You have asked Firefox to connect securely to **portal.aut.ac.ir**, but the connection is not secure.

Normally, when you try to connect securely, sites will be going to the right place. However, this site's identity is not trusted.

**What Should I Do?**

If you usually connect to this site without problems, the site might be impersonating the site, and you shouldn't continue.

Get me out of here!

- Technical Details
- I Understand the Risks** ← 1

If you understand what's going on, you can tell Firefox that you trust the site. This error could mean that someone is trying to impersonate the site, and you shouldn't continue.

Don't add an exception unless you know there's a good reason to do so.

Add Exception... ← 2

**Add Security Exception**

You are about to override how Firefox identifies this site. Legitimate banks, stores, and other public sites will not ask you to do this.

Server

Location:  Get Certificate

Certificate Status

This site attempts to identify itself with invalid information. View...

**Wrong Site**

The certificate belongs to a different site, which could mean that someone is trying to impersonate this site.

**Unknown Identity**

The certificate is not trusted because it hasn't been verified as issued by a trusted authority using a secure signature.

Permanently store this exception

Confirm Security Exception ← 3 Cancel

: Chrome در

**Your connection is not private**

Attackers might be trying to steal your information from **portal.aut.ac.ir** (for example, passwords, messages, or credit cards). NET::ERR\_CERT\_AUTHORITY\_INVALID

Automatically report details of possible security incidents to Google. [Privacy policy](#)

Hide advanced ← 1 [Back to safety](#)

This server could not prove that it is **portal.aut.ac.ir**; its security certificate is not trusted by your computer's operating system. This may be caused by a misconfiguration or an attacker intercepting your connection.

[Proceed to portal.aut.ac.ir \(unsafe\)](#) ← 2